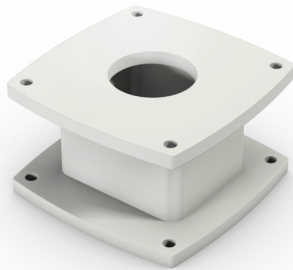


ADAPTER PILLAR HMA I-130
45061-XXXXX-XXXXXXX

Stable pillar for rigid mounting of HMA I-130 suspension system for level compensation on surrounding machine parts

- Default colours
 - Components: RAL 7035 (Light grey)
 - Special colours on request

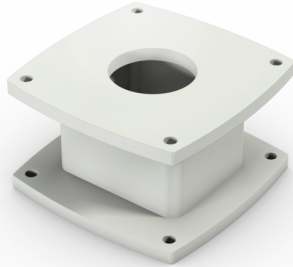


Product code 45061-xxxxx-xxxxxxx

Safety Class IP 54 DIN EN 60529

ADAPTER PILLAR HMA I-130

45061-XXXXX-XXXXXXX



For level compensation between HMA I-130 support arm and surrounding machine parts

- Default colour
 - RAL 7035 (Light grey)
 - Special colours on request
- Height up to 1000 mm in 100 mm increments
- Internal cable ducting
- Top and bottom flange plate for HMA I-130 top mounted joint

Product code	Description
45061-01000-1703511	Adapter pillar HMA I-130, 100 , Colour: RAL 7035
45061-02000-1703511	Adapter pillar HMA I-130, 200 , Colour: RAL 7035
45061-03000-1703511	Adapter pillar HMA I-130, 300 , Colour: RAL 7035
45061-04000-1703511	Adapter pillar HMA I-130, 400 , Colour: RAL 7035
45061-05000-1703511	Adapter pillar HMA I-130, 500 , Colour: RAL 7035
45061-06000-1703511	Adapter pillar HMA I-130, 600 , Colour: RAL 7035
45061-07000-1703511	Adapter pillar HMA I-130, 700 , Colour: RAL 7035
45061-08000-1703511	Adapter pillar HMA I-130, 800 , Colour: RAL 7035
45061-09000-1703511	Adapter pillar HMA I-130, 900 , Colour: RAL 7035
45061-10000-1703511	Adapter pillar HMA I-130, 1000 , Colour: RAL 7035